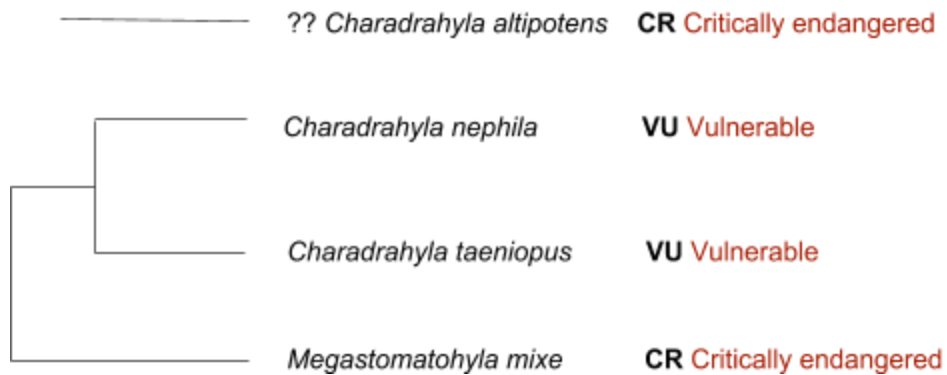


1. Look at the frogs in your tray, what are their similarities? What are their differences?
2. Based on morphology which species do you think are more closely related?
3. Find their placement in the phylogeny! Which species are more closely related? How does that differ from your previous guess?! What is happening with *C. altipotens*?



4. Imagine that you work for a Governmental organization deciding which area from Mexico needs conservation priority based on their frog species. If you could only choose one, which area would you recommend to prioritize considering the next four aspects:
  - Species distribution (see maps below)
  - Species diversity (number of species per area)
  - Species relationships
  - Species threatened status

